

A PLACE TO GROW A STORY TO DISCOVER

Welcome to Early Childhood Management Services (ECMS)

For over fifteen years we have been providing early childhood education and care for children, parents, families and communities across Melbourne. As a not-for-profit community enterprise, our education programs touch the lives of 5000 children and families—from managing and supporting kindergartens and early learning centres through to family day care schemes.

Our guiding philosophy is to embrace all children and families in the services we provide, creating learning environments that nurture, inspire, educate and offer a sense of belonging.

At our heart is a passion for seeing every child and family grow in their journey with us and to have their voice heard. We never take for granted the role we play in their lives and within the community.

We're looking forward to walking with you along this journey of discovery for your child.

Our Vision for Every Child and Family

A community where every child has the opportunity to be their best and where every parent, family and community is enriched by the experience of their child's learning.

What we Value

We have created a set of core values that allow us to live out our vision every day:

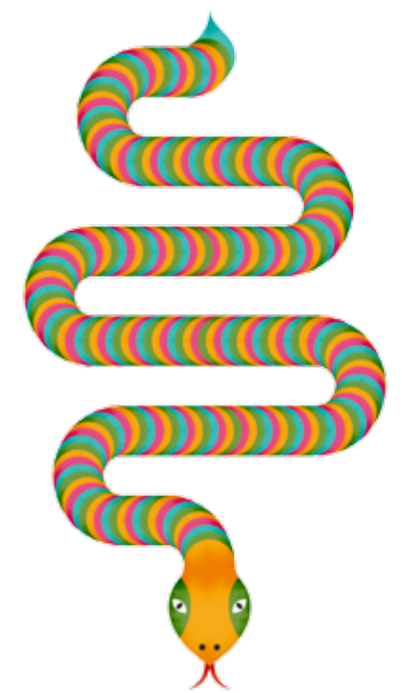
- Respect
- Inclusion
- Learning and Enrichment
- Connectedness
- Responsiveness
- Trust



Your Child's Early Years

We provide a safe, quality, family-centred learning environment where every child is respected and nurtured.

To keep pace with change, we will continually develop our skills and explore new ways to enrich a child's early learning experience. Just as important is encouraging parents and families to play an active role in this journey—further enhancing the child's belonging and resilience to deal with life's challenges.



One Community

We are truly connected to the children and families we serve, and take the lead in delivering early childhood services that respond to the specific needs of each community.

This means we are trusted and valued for the role we play, ensuring the services we provide are sustainable and accessible to all. In embracing equal learning opportunities regardless of ability or culture, we create environments which are understanding and empowering for the child and family.



Our People

Our team of educators, carers and professionals share a common goal—to provide the best possible early childhood services.

Creating an inclusive, positive and vibrant culture of learning allows us to attract highly talented and motivated people; people who are committed to never stop improving the services we provide. We support our people to take leading roles in their local community.



A Shared Future

We encourage every child and family to explore new ideas and express themselves freely. We live by the same belief, taking an active role in developing new initiatives and advances in early childhood services.

It's about taking real leadership, not just in the services we provide, but in advocating for and on behalf of children and families. We do this in partnership with parents, community groups, governments and business—for the benefit of all.

Feature Story

How the Murray River was made

Story telling is a wonderful way of connecting with children.

The story of How the Murray River was made has particular meaning to ECMS. Biامي's journey is a story of discovery and creation. It has real significance to our vision—creating an environment and a future that all can enjoy and prosper in.

Are you listening? I'm going to tell you a traditional story about how the Murray River was made.

One day there was a lady and she had three dogs.

She walked down the hills into the valleys.

Do you know what she did?

She dragged a digging stick behind her. She made a deep scratch along the ground.

Nearby there was a big snake of many colours sleeping in the hills.

The sound of the old lady woke him up and he came down the hills slithering and sliding.

He was very angry to be woken up!

He moved along the deep scratch making it wider and wider creating a riverbed.

Soon after, it rained and rained, flooding the river until it was big and deep.

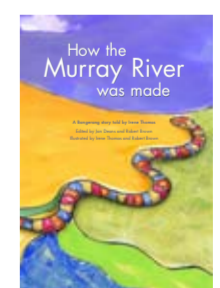
And that's how the Murray River was made.

A true story about Biامي the God of the Banerang people.

Told by Irene Thomas

Illustrated by Irene Thomas and Robert Brown

Compiled by Jan Deans and Robert Brown



Please note that the illustration is an ECMS owned and developed illustration and is not intended to replicate Aboriginal artwork. Our illustration is a modern interpretation of this wonderful story and has been created to fit with the ECMS visual style. Aboriginal artwork of How the Murray River was made is featured in the book which is available from the University of Melbourne Early Learning Centre. A copy of the book is also kept at each ECMS service.